



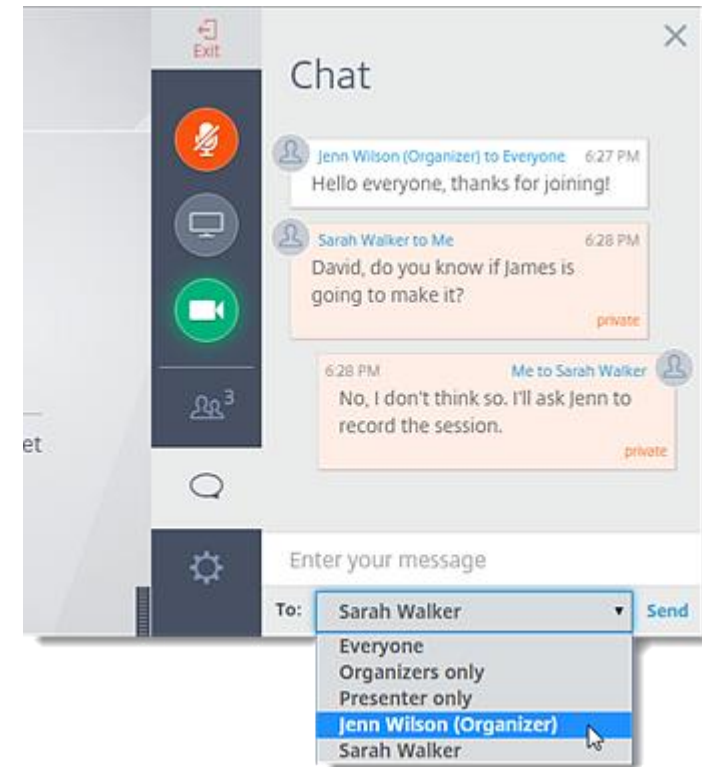
Industry Advisory Committee

ENERGY

AUGUST 30, 2018

GoToWebinar Functionality

- Toolbar with orange arrow to expand or collapse
- Muting your microphone
- Raise your hand feature
- Chat and question box – drop down menu to respond to presenter or entire group



August Webinar Agenda

1. Committee Member Introductions
2. Roles and Responsibilities
3. Timeline
4. Programs of Study

Industry Advisory Committee Introductions

Energy Advisory Committee Members

Name	Position	Email Address
Bryant Dyer	Lee College-Lead Process Tech Instructor	bdyer@lee.edu
Chad Burke	CEO-Economic Alliance Houston Port Region	chad@allianceportregion.com
Chris Pattison, PhD	Texas Tech University-National Wind Institute	Chris.Pattison@ttu.edu
Christy Ponce, PhD	Executive Vice President of Lee College	cponce@lee.edu
Dan Lepinski	North Texas Renewable Energy Group	dan@ntree.org
David Esquibel	Shell	david.esquibel@shell.com
Emily Mitis	Texas Alliance of Minorities in Engineering	Emily.Mitis@tame.org
Eric Newby	North American Process Technology Alliance	director@naptaonline.org
Fernando Marquez	CTE Director, Ysleta ISD	fmarquez@yisd.net
Fred Lopez	Workforce Solutions -Employer Services Houston	Fred.Lopez@wrksolutions.com
Glynis Strause	ConocoPhillips	glynis.H.Strause@conocophillips.com
Greg Wortham	New Amsterdam Global	gwortham@roscoe.esc14.net
Heather Ball	Texas Natural Gas Foundation	heather@txng.org
Hilary Olson, PhD	University of Texas, Petroleum and Geosystems Engineering	holson@austin.utexas.edu
Jenna Moon	HISD-Energy Institute Corporate Liason	JMOON2@houstonisd.org
Jennifer Patterson	Enerprise Producers-Internships (Midstream)	JMPATTERSON@eprod.com
Joe Thierry	Covestro	joe.thierry@covestro.com
Joseph Zwiercan	Division Chair-San Jacinto Petrochemical/Energy Technology	joseph.zwiercan@sjcd.edu
Katherine Beeman	Western Texas Energy Consortium	katherine@wtxec.org

Industry Advisory Committee Introductions

Energy Advisory Committee Members

Name	Position	Email Address
Kelly Dando	Community College Petrochemical Initiative	kdando@lee.edu
Kim Evans	Midland ISD CTE Director	Kim.Evans@midlandisd.net
Lauren Van Gerven	Workforce Solutions SETX	lauren.vangerven@setworks.org
Libby Olsen	Ineos	libby.olson@ineos.com
Lori Lambropoulos	HISD-Energy Institute Principal	llambrop@houstonisd.org
Masa Prodanovic, PhD	University of Texas, Petroleum and Geosystems Engineering	masha@utexas.edu
Mayra Cochran	Dow	mayraCochran@dow.com
Miranda Phillips	Dean of Student and Academic Success Lamar Insitute of Technology	mphillips1@lit.edu mrougeau@esc4.net
Monelle Rougeau	ESC 4	
Pete Avalos	Midland College Division Chair-Petroleum	pavalos@midland.edu
Sarah Castro	IPAA/PESA Energy Education Center	scastro@ipaa.org
Steve Horton, EdD	Director of School Training-CMEF	s.horton@cmefhouston.org
Steve Moore	Lead Instructor PTAC @ Del Mar	smoore23@delmar.edu
Tammy Netherland	Systranic	tnetherland@systranic.com
Timothy Jacobs, PhD	Texas A&M Engineering	tjjacobs@tamu.edu

Meeting Norms

- Being student focused
- Circle of trust
- Assume positive intent
- Speak freely
- Balance urgency with patience
- Monitor your airtime

Roles and Responsibilities

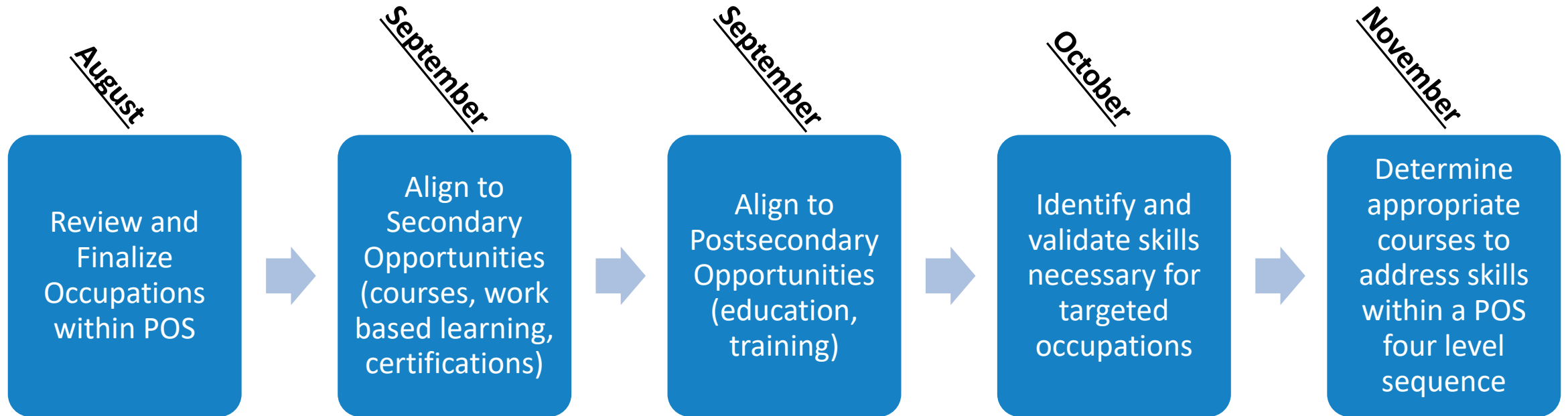
Committee Members

- Review occupations and skills related to Programs of Study
- Determine alignment of skills, secondary opportunities, and postsecondary opportunities
- Create course sequencing options for implementation of Programs of Study

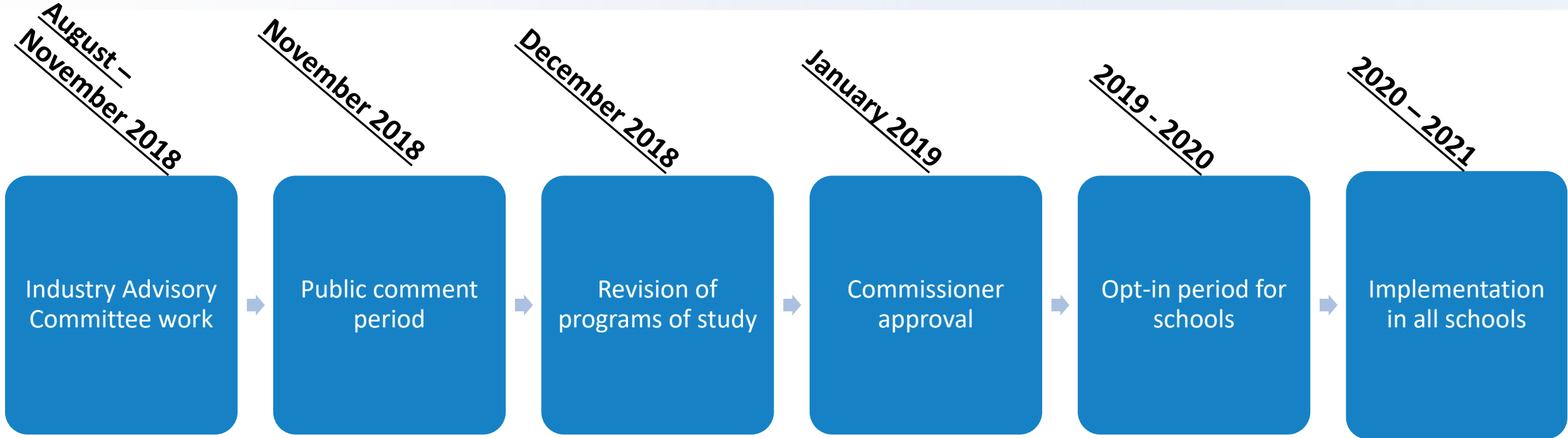
TEA Staff

- Collection of labor market data
- Identify proposed Programs of Study from labor market data
- Utilize committee input to define Programs of Study
- Communicate information regarding Programs of Study to the field

Committee Timeline



Project Timeline



Program of Study Methodology Data

EMSI*

Labor Market Information Expert

18B data points from dozens of government data sources, updated quarterly.

Hundreds of millions of online job openings

>100M million U.S. individuals' employment and education profiles

Over 40M individual compensation observations

Custom Crosswalks

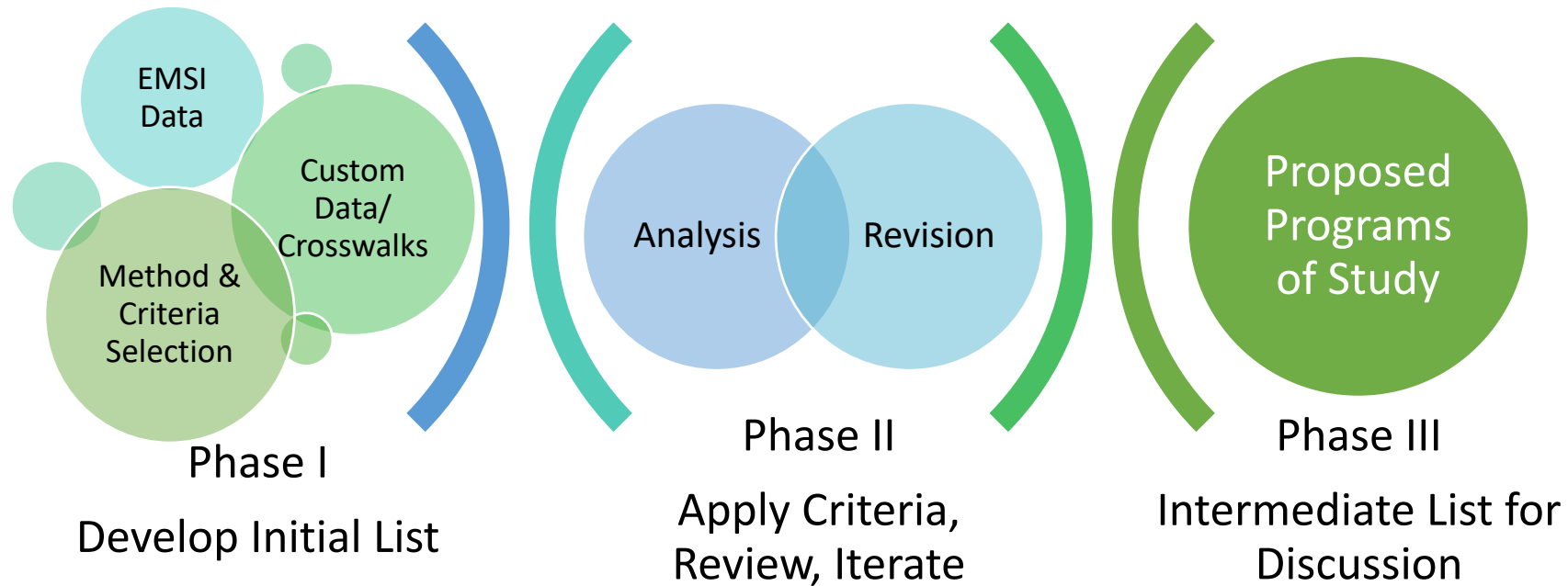
Methodology Analysis and Recommendation

Texas postsecondary (IPEDS) completers

Texas LWDA Data

* EMSI information can be found at: <https://www.economicmodeling.com/data/>

Program of Study Methodology Overview



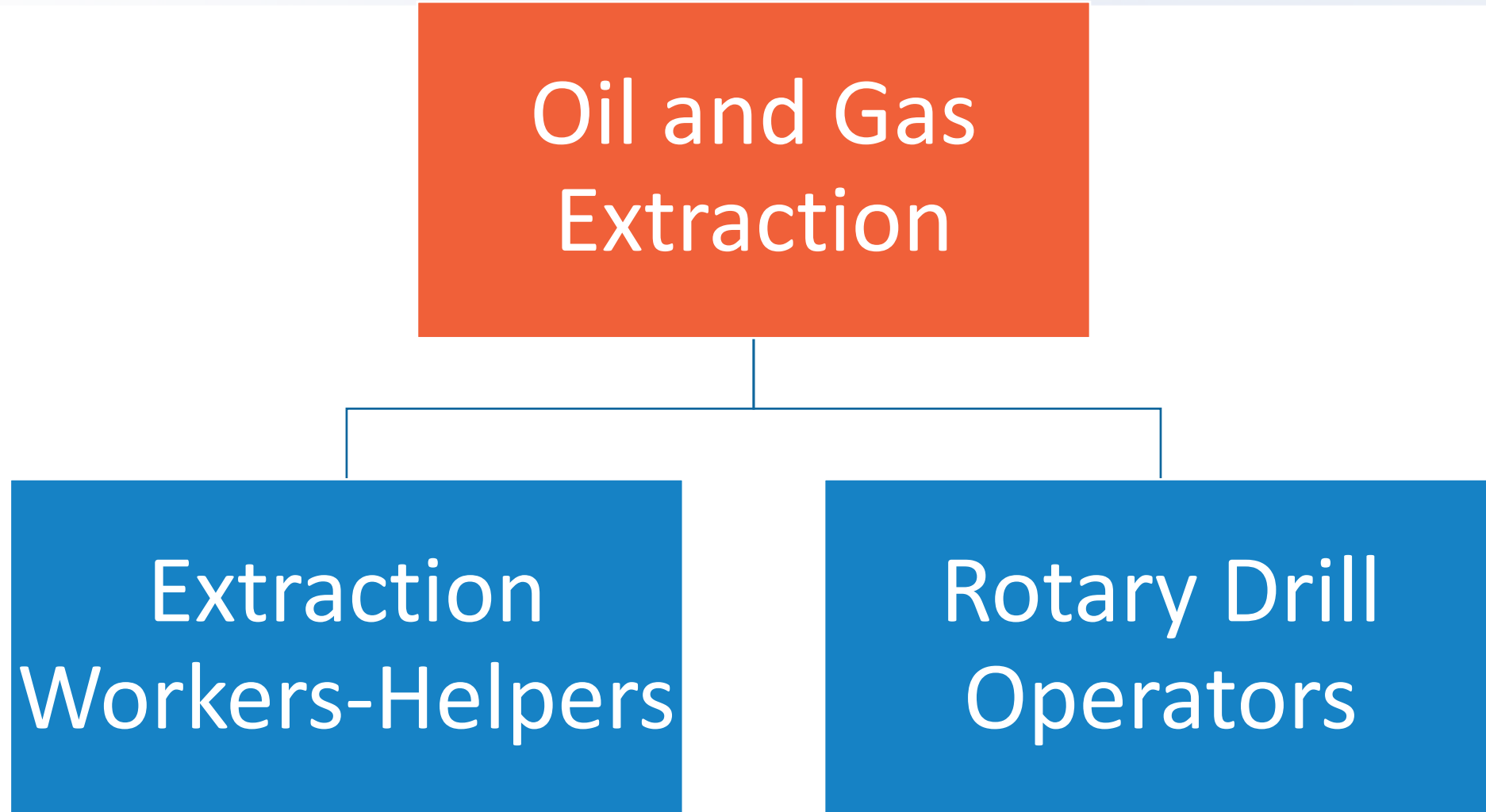
What is a Program of Study?

A Program of Study should include:

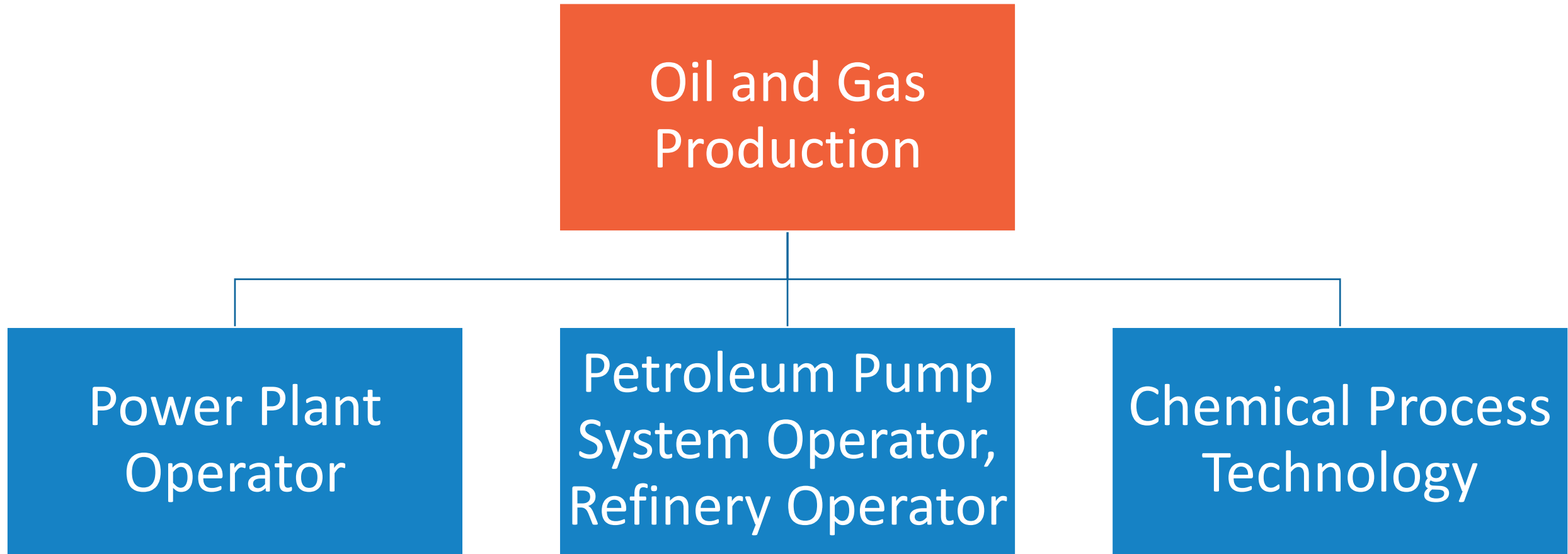
- **A sequence of non-duplicative secondary courses supporting a defined area of careers and embedding academic and technical content**
- **High-school work-based learning**
- **Industry Based Certifications needed to obtain careers**
- **Postsecondary education and training opportunities tied to career entry points**
- **Multiple education and training exit points along the career progression**

New programs of study are essential for meeting federal requirements for Perkins and ensuring CTE concentrators are prepared to earn a valued credential.

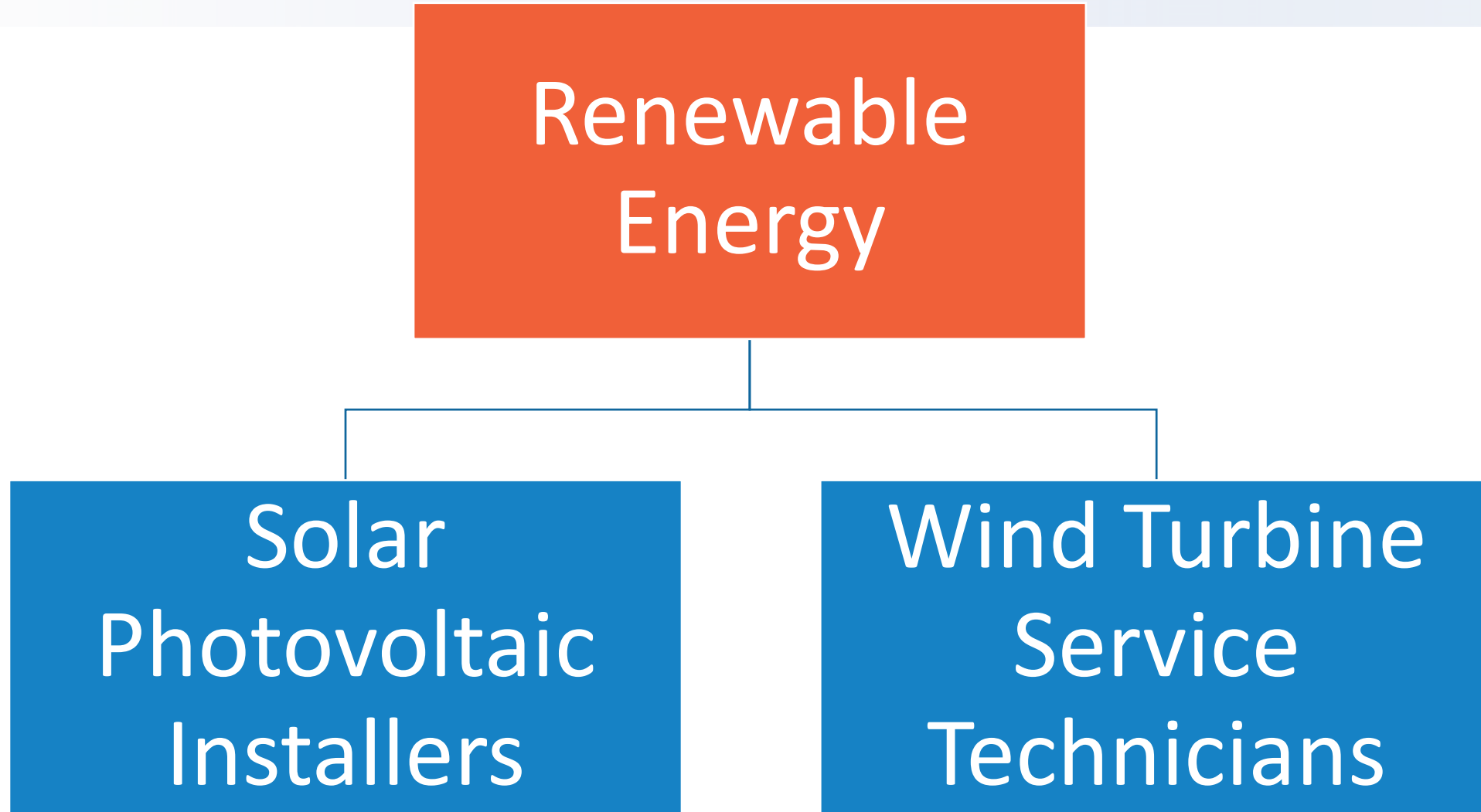
Programs of Study Overview



Programs of Study & Occupations



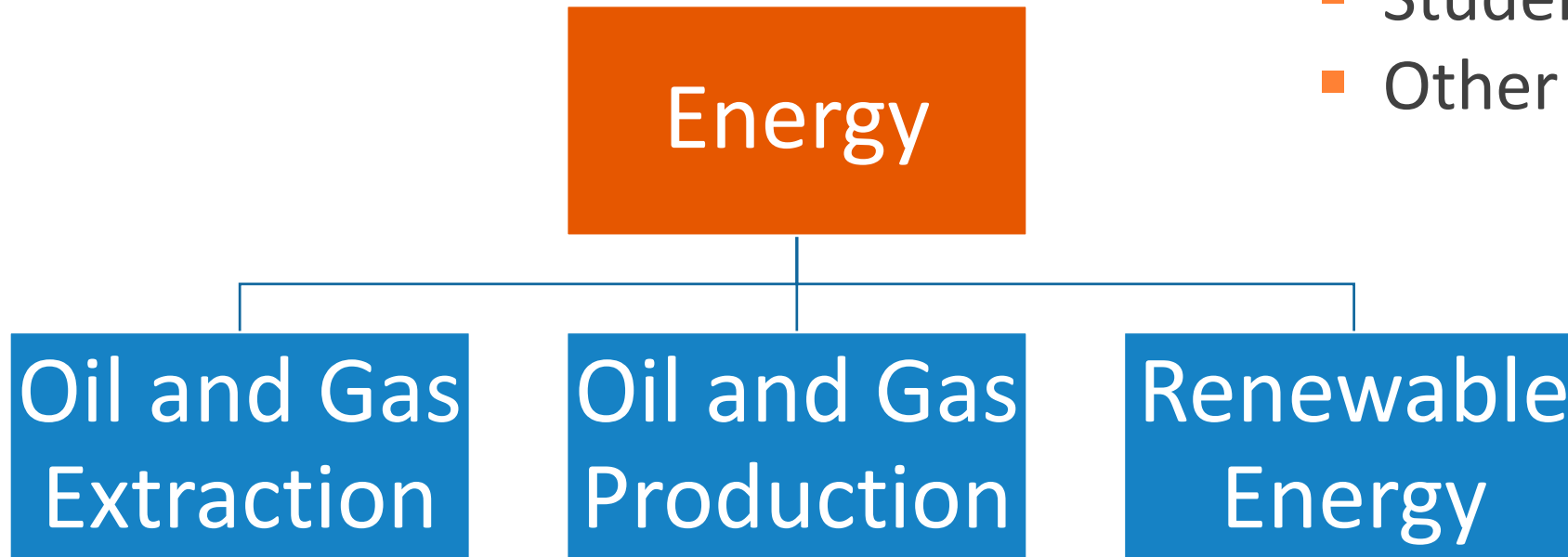
Programs of Study & Occupations



Occupations Not Meeting Criteria

Program of Study	Related Occupations (within POS)	SOC	Growth Rate (TEA Criteria 17%)	Annual Openings (TEA Criteria 500)	Wage (TEA Criteria \$35,399)
Nuclear					
	Nuclear Technicians	19-4051	2%	32	\$77,854

Energy Programs of Study



- Misaligned occupations
- Missing occupations
- Student engagement
- Other issues

Next Steps

- Postsecondary programs:
Opportunities for students to continue their education and training beyond high school. This includes Level I and II certificates, apprenticeships, associate, and bachelor's degree programs.

- Work based learning:
Work-based learning is a continuum of intentional activities and experiences designed to expand the boundaries of the classroom and prepare students for future career opportunities.

- Work-based learning provides opportunities for students to:
 - apply knowledge learned in the classroom;
 - explore potential career options;
 - engage with business and industry practitioners; and
 - develop essential 21st century skills.

Next Steps

- Review revisions to programs of study
- Prepare for Job Profile validation
- Web meeting: October 4, 2018 at 10am CST
- In-person meeting: November 9, 2018 in Austin (details forthcoming)
- Exit Ticket:

https://tea.co1.qualtrics.com/jfe/form/SV_85EJ9pepzfdL6IZ

- Follow up request

https://tea.co1.qualtrics.com/jfe/form/SV_bNuJhJd3IMZQuPP

For more information, please contact:

Laura Torres

Laura.Torres@tea.texas.gov

512-936-5922

Ryan Merritt, Statewide CTE Director

Ryan.Merritt@tea.texas.gov