

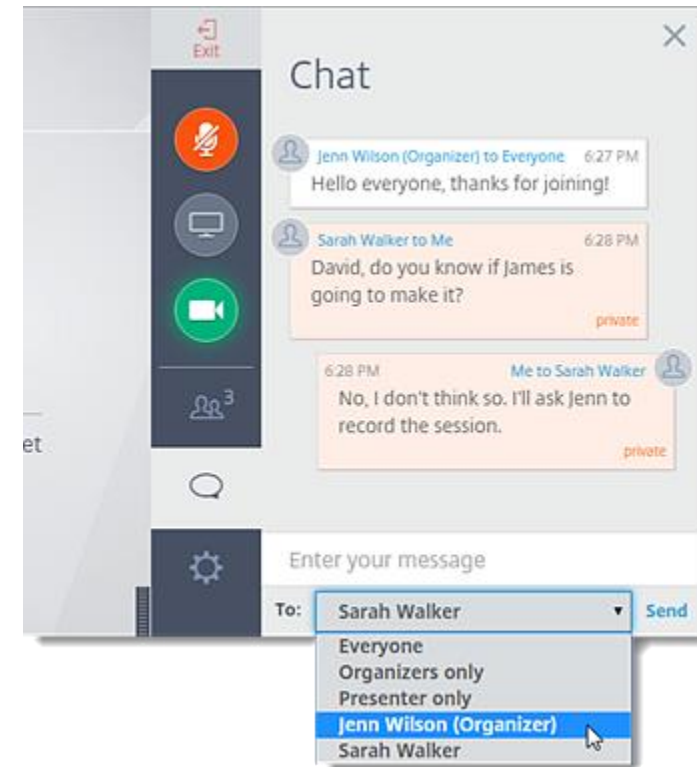


Industry Advisory Committee

INFORMATION TECHNOLOGY
AUGUST 21, 2018

GoToWebinar Functionality

- Toolbar with orange arrow to expand or collapse
- Muting your microphone
- Raise your hand feature
- Chat and question box – drop down menu to respond to presenter or entire group



August Webinar Agenda

1. Committee Member Introductions
2. Roles and Responsibilities
3. Timeline
4. Programs of Study

Industry Advisory Committee Introductions

Information Technology Advisory Committee Members

Name	Position	Email Address
Alex Garcia	Instructor, South Texas ISD and TSA Contest Director	alejandro.garcia@stisd.net
Barbara Walker	Territory Account Manager, CISCO	bwalker@cisco.com
Bart Taylor	Instructor, College Station ISD, TIVA President Elect and Skills USA Director	btaylor@csid.org
Becky McCully	Regional Manager, TEALS	beckym@tealsk12.org
Camille Clay	Senior Director, College and Career Transition Programs, Leander ISD	camille.clay@leander.isd
Carol Fletcher, PhD	Deputy Director, College of Education, Center for STEM Education, University of Texas	carol.fletcher@utexas.edu
Christal Thompson	Project Manager, Microsoft	Christal.Thompson@Microsoft.com
Frederick Hall	Information Technology Professional	frederick.f.hall@gmail.com
Gretchen Riehl, PhD	Associate Vice President, Workforce Education Austin Community College	Gretchen.riehl@austincc.edu
Hal Speed	Founder, CS4TX	hal@cs4tx.org
J J Childress	Community Engagement Manager, Microsoft	jonathan.childress@microsoft.com
Jennifer Spille	Senior Account Executive, Apple	ijen@apple.com
Jose Palacios	Project Manager, Heart of Texas Workforce Solutions	jose.palacios@hotworkforce.com
Kevin Hodges	South-Central Regional Educational Manager, Google for Education at Google	khodges@google.com
Natalie Littlefield	Education and Economic Development, Workforce Solutions Borderplex	Natalie.littlefield@borderplexjobs.com
Ravi Shakamuri	CEO, Star Tech Group LLC	rshakamuri@startechgroup.com
Roy Nieto	CEO, SureScore	roy@surescore.com

Meeting Norms

- Being student focused
- Circle of trust
- Assume positive intent
- Speak freely
- Balance urgency with patience
- Monitor your airtime

Roles and Responsibilities

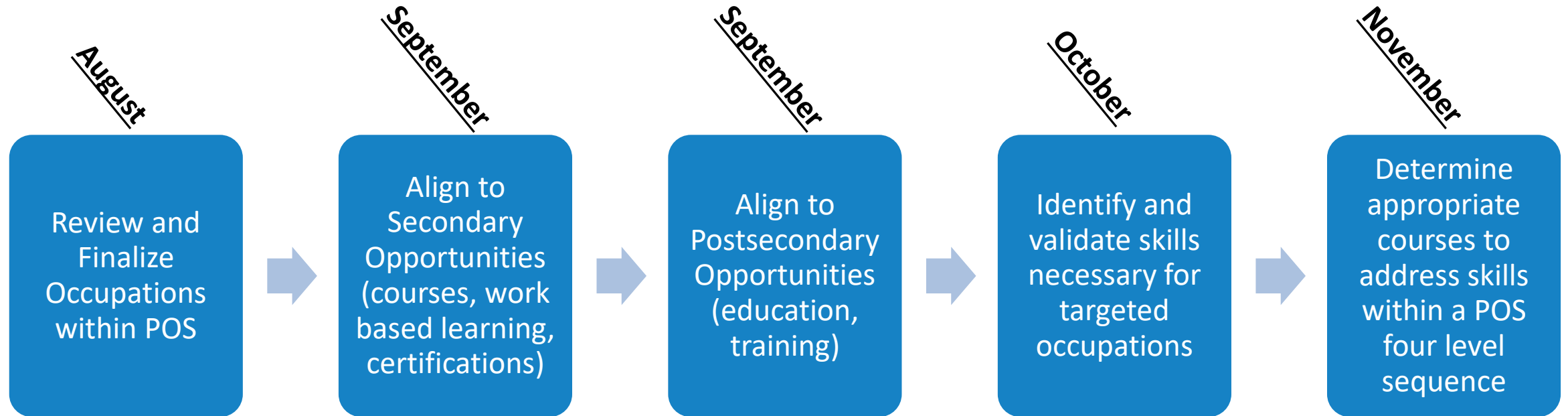
Committee Members

- Review occupations and skills related to Programs of Study
- Determine alignment of skills, secondary opportunities, and postsecondary opportunities
- Create course sequencing options for implementation of Programs of Study

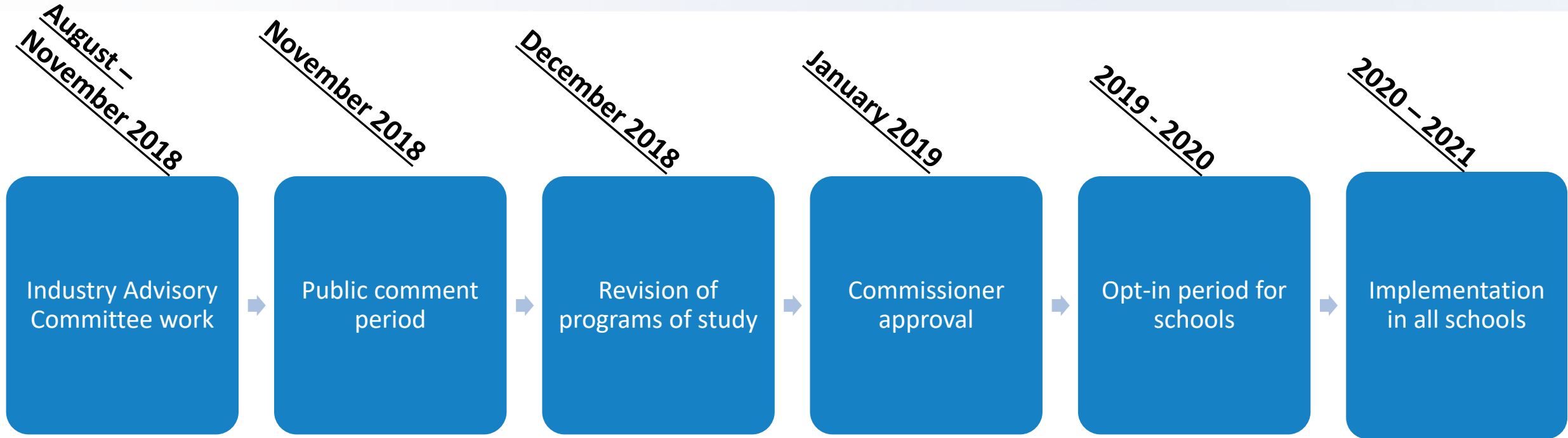
TEA Staff

- Collection of labor market data
- Identify proposed Programs of Study from labor market data
- Utilize committee input to define Programs of Study
- Communicate information regarding Programs of Study to the field

Committee Timeline



Project Timeline



Program of Study Methodology Data

EMSI*

Labor Market Information Expert

18B data points from dozens of government data sources, updated quarterly.

Hundreds of millions of online job openings

>100M million U.S. individuals' employment and education profiles

Over 40M individual compensation observations

Custom Crosswalks

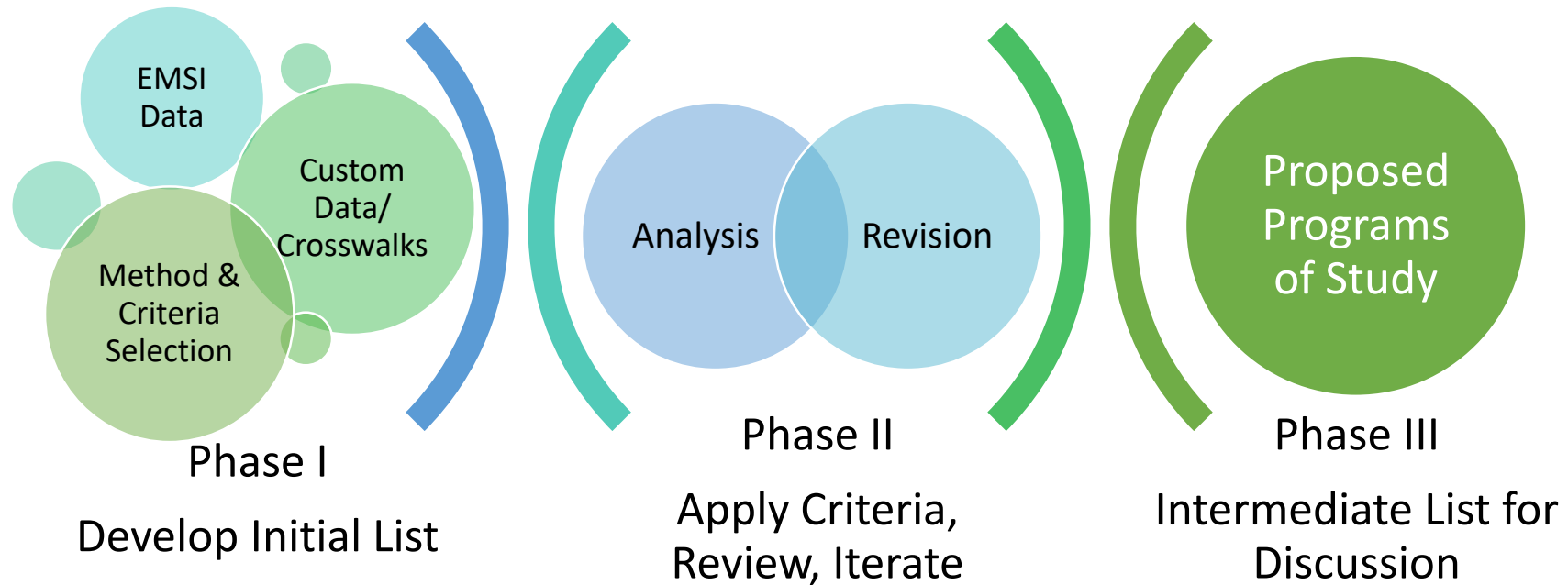
Methodology Analysis and Recommendation

Texas postsecondary (IPEDS) completers

Texas LWDA Data

* EMSI information can be found at: <https://www.economicmodeling.com/data/>

Program of Study Methodology Overview



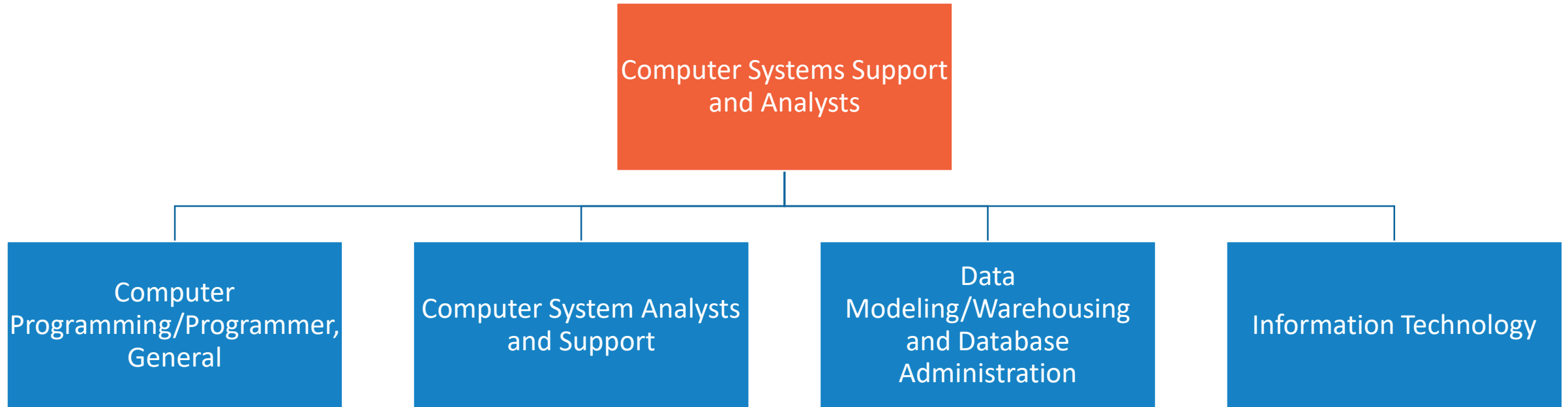
What is a Program of Study?

A Program of Study should include:

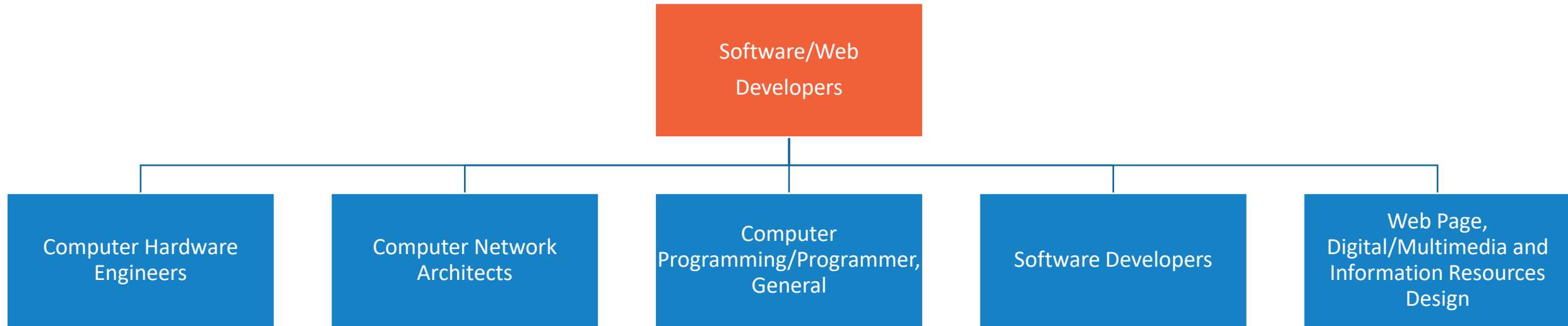
- **A sequence of non-duplicative secondary courses supporting a defined area of careers and embedding academic and technical content**
- **High-school work-based learning**
- **Industry Based Certifications needed to obtain careers**
- **Postsecondary education and training opportunities tied to career entry points**
- **Multiple education and training exit points along the career progression**

New programs of study are essential for meeting federal requirements for Perkins and ensuring CTE concentrators are prepared to earn a valued credential.

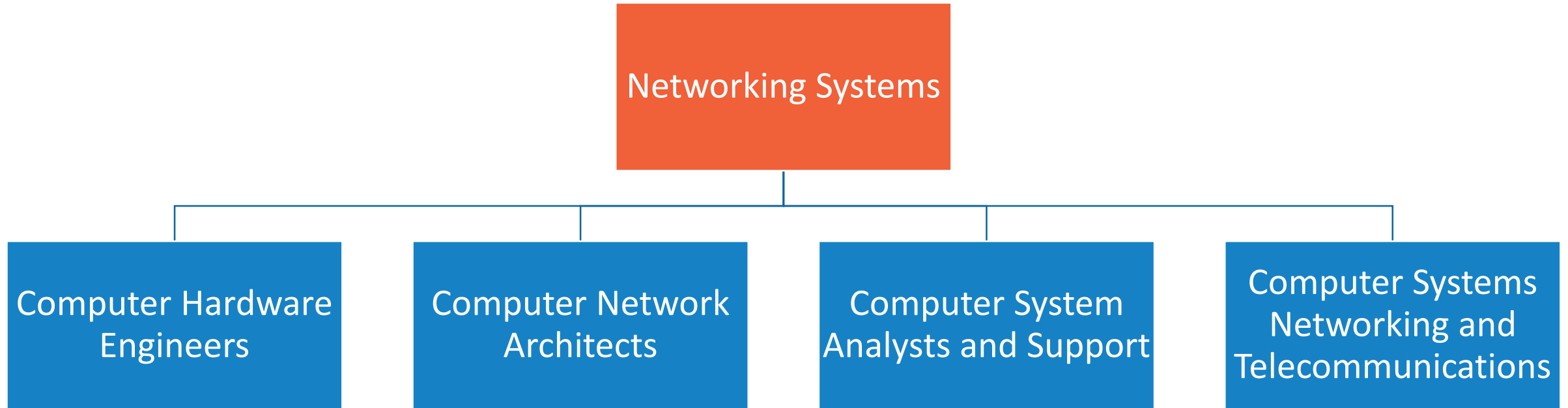
Programs of Study Overview



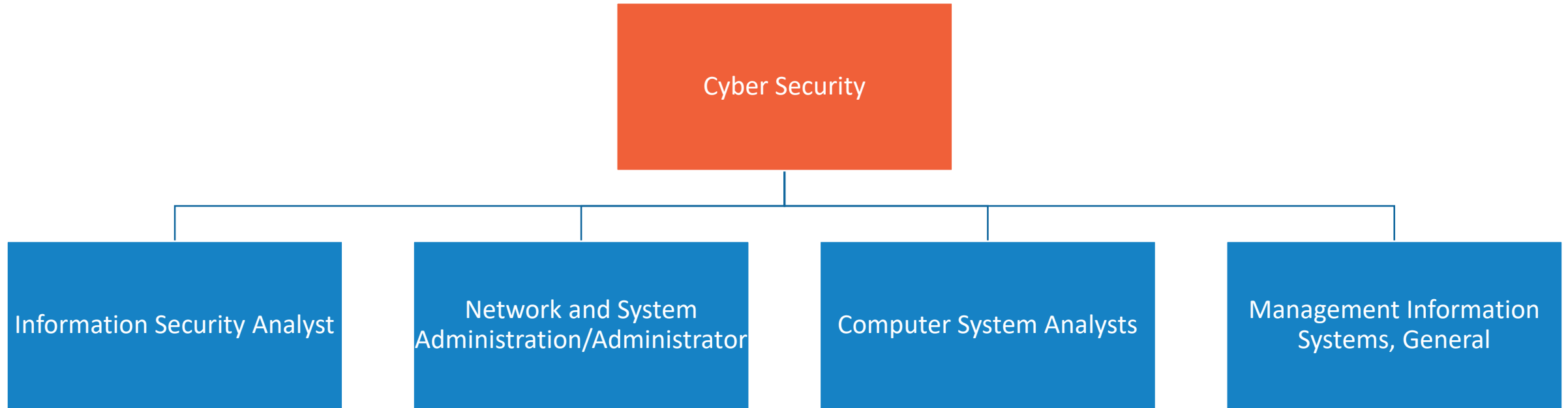
Programs of Study & Occupations



Programs of Study & Occupations

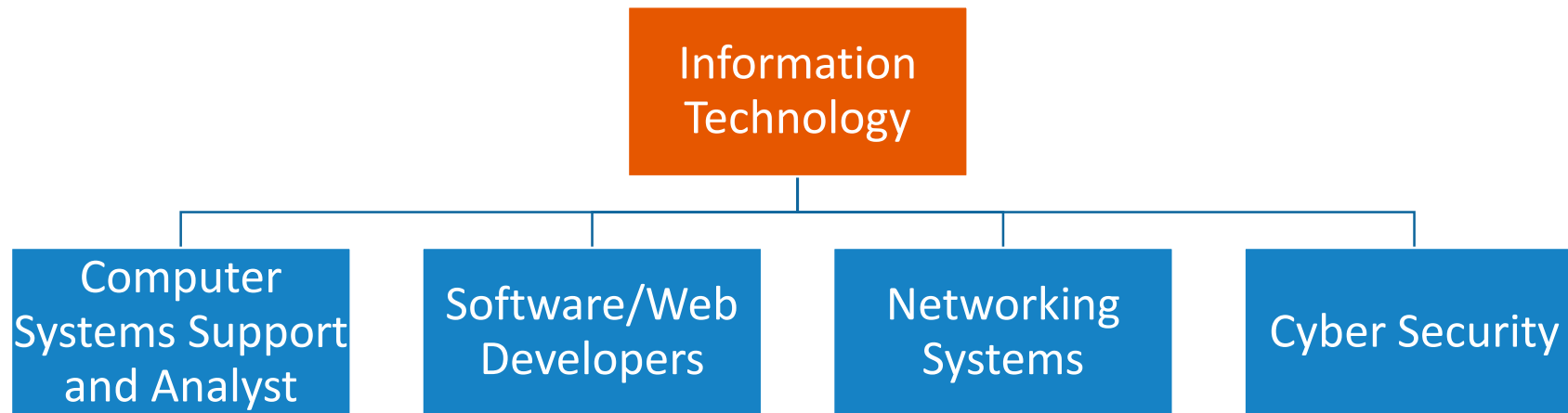


Programs of Study & Occupations



Questions for Discussion

- Misaligned occupations
- Missing occupations
- Student engagement
- Other issues



Next Steps

- Postsecondary programs:
Opportunities for students to continue their education and training beyond high school. This includes Level I and II certificates, apprenticeships, associate, and bachelor's degree programs.

- Work based learning:
Work-based learning is a continuum of intentional activities and experiences designed to expand the boundaries of the classroom and prepare students for future career opportunities.

- Work-based learning provides opportunities for students to:
 - apply knowledge learned in the classroom;
 - explore potential career options;
 - engage with business and industry practitioners; and
 - develop essential 21st century skills.

Next Steps

- Review revisions to programs of study
- Prepare for Job Profile validation
- Web meeting: September 25, 2018 at 10am CST
- In-person meeting: November 9, 2018 in Austin (details forthcoming)
- Exit Ticket:

https://tea.co1.qualtrics.com/jfe/form/SV_85EJ9pepzfdL6IZ

- Follow up request

https://tea.co1.qualtrics.com/jfe/form/SV_bNuJhJd3IMZQuPP

For more information, please contact:

Laura Torres

Laura.Torres@tea.texas.gov

512-936-5922

Ryan Merritt, Statewide CTE Director

Ryan.Merritt@tea.texas.gov