

Business Math Quiz (Key)

Read the word problems carefully showing your work on the side. Circle the correct answer.

1. Jason is closing the register at the end of the day. He is in charge of counting all the change. There are 129 coins counting only quarters and dimes. If Jason counts \$27.00 in these coins, how many quarters(x) and dimes(y) are there?

Solve the system of equations to find the answer.

$$x + y = 129$$

$$.25x + .10y = \$27.00$$

- a. $x = 100, y = 29$
- b. $x = 70, y = 95$
- c. $x = 94, y = 35$**
- d. $x = 150, y = 15$

Quarters (x) + dimes (y) = 129

$.25 * x + .10 * y = \$27.00$

$.25 * 94 + .10 * 35 = \$27.00$

$\$23.50 + \$3.50 = \$27.00$

2. The annual salaries of the employees working at The Island Resort are listed.

Employee	Yearly Salary
Janie	\$22,570.00
Joe	\$32,400.00
Rosie	\$17,800.00
Roy	\$22,695.00
Oscar	\$28,700.00
Mary	\$45,270.00
Lynda	\$38,950.00

What is the average salary and range for these salaries?

$$\text{Average} = \frac{\text{Total Salaries}}{\text{Number of employees}}$$

$$\text{Range} = \text{Highest salary} - \text{Lowest Salary}$$

- a. \$28,273.00, \$27,470.00
- b. \$29,769.00, \$27,470.00**
- c. \$208,385.00, \$63,070.00
- d. \$28,000.00, \$63,070.00

Average = $\$208,385 \div 7$

Average = \$29769.00

Range = $\$45,270.00 - \$17,800.00$

Range = \$27,470.00

Business Math Quiz (Key)

Read the word problems carefully showing your work on the side. Circle the correct answer.

3. Sally is the concierge at a hotel. She is booking a water park trip for the Sanchez family that includes 2 adults, 2 seniors and 3 children ages 11, 13 and 15. With the hotel discount the ticket prices are:

- general admission (x) (12 – 54 years) \$36.79
- child/senior admission (y) (3 – 11 & 55+ years) \$28.79

How much will Sally charge the Sanchez family?

Use the equation to calculate your total cost: $C = \$36.79x + \$28.79y$

- a. \$217.53
- b. \$233.53
- c. \$65.58
- d. \$241.53

$$C = \$36.79 * 4 + \$28.79 * 3$$
$$C = \$147.16 + \$86.37$$
$$C = \$233.53$$

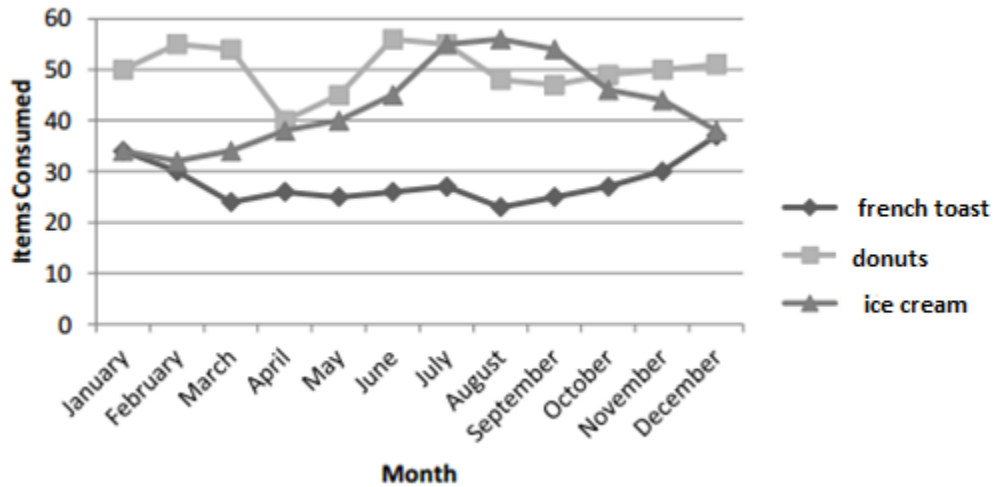
4. Rose is planning to go on a cruise. The price per person in June is \$389.00 and the price in October is \$239.00. Why are the prices cheaper in October?

- a. It is too cold to take a cruise in October.
- b. Families plan travel during the summer when children are out of school.
- c. Cruises cost more at the beginning of the year, than at the end of the year.
- d. People don't travel in October.

Law of supply and demand.
Cruises are more popular in the summer when it is hot and school is not in session.

Business Math Quiz (Key)

Read the word problems carefully showing your work on the side. Circle the correct answer.



5. Analyze the sweets chart. Which statement would be correct?

- a. Donuts are the lowest selling item in January
- b. Ice cream is the high seller in August.**
- c. French toast is the top seller in December.
- d. Ice cream is the lowest selling item in November.

- a. Ice cream and French toast are the lowest selling items in January**
- b. True**
- c. Donuts are the top sellers in December**
- d. French toast is the lowest selling item in November**